

**software solutions development**

*As if time mattered...*





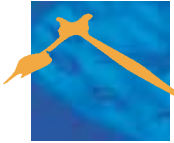
### **Time matters...**

---

In today's business, having IT related projects delivered on time and to budget is even more important than ever:

That's why Hawkesbury Consulting specialises in the supply of software solutions to a fixed price, fixed time model. We are able to provide this through our strong understanding of technology, underpinned with an effective development process model. Using the latest technology we provide innovative Internet, client server and database solutions to meet our clients requirements.

- ◆ **e-Business Solutions**
- ◆ **Data Management Applications**
- ◆ **Control and Monitoring Solutions**



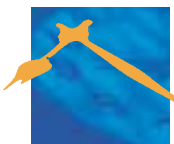
## e-Business Solutions

With the rapid development of Internet technology, e-business solutions are becoming the standard way of delivering data entry and information services. This is opening up whole new ways of doing business over the Internet. In addition to this, traditional database applications can now be implemented to operate over the Internet or local Intranet services. Providing a solution in this way significantly reduces the high deployment and support costs typically associated with client server applications.

Hawkesbury Consulting specialises in the design and development of data aware Internet solutions. Working in close partnership with your organisation and through rapid prototyping techniques, we will help refine the requirements for your solution.

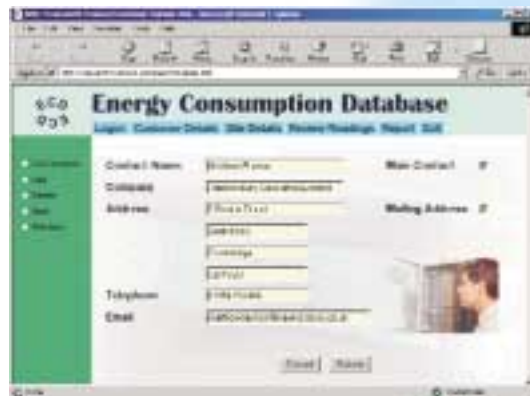
- ◆ e-Commerce
- ◆ Energy & Utilities
- ◆ Financial Services
- ◆ Time Recording
- ◆ On Line Reporting
- ◆ Order Processing

Using a rapid application development approach and the latest technology, Hawkesbury Consulting can deliver Internet applications integrated with database technology in minimal time. Together with our consultancy services, we can provide support with all aspects of the deployment of your Internet site, including sizing and configuration of servers.



## Technology

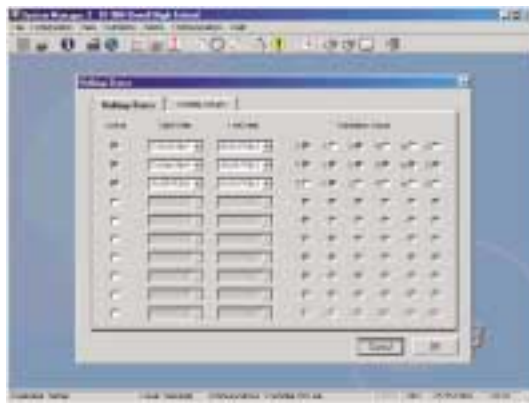
- ◆ ASP
- ◆ DHTML
- ◆ XML
- ◆ Microsoft® ADO
- ◆ JavaScript
- ◆ VBScript
- ◆ Microsoft® Interdev





## Data Management Applications

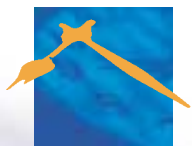
Hawkesbury Consulting delivers innovative software solutions from single user applications to multi user client server systems to meet your specific requirements. With our strong technological background, we are able to select from a wide range of database technologies and development languages to ensure delivery of the correct implementation.



Working in close partnership with your organisation and through the deployment of our iterative development model, Hawkesbury Consulting will provide a user interface for your application that is intuitive and straightforward to use.

- ◆ Sales Force Automation
- ◆ Customer Relationship Management
- ◆ Payroll & Accountancy Applications
- ◆ Personnel Management Applications
- ◆ Data Management and Integration Solutions

Systems integration forms a fundamental part of building today's business solutions. Together with our consultancy services, Hawkesbury Consulting can advise on the best approach to systems integration to maximise the use of existing data. With our software development facility, we are able to implement the bespoke applications required to provide a fully integrated solution.



## Technology

- ◆ Microsoft® Visual Studio
- ◆ Microsoft® SQL Server
- ◆ Oracle
- ◆ Sybase
- ◆ Microsoft® Access
- ◆ MSMQ





## Control & Monitoring

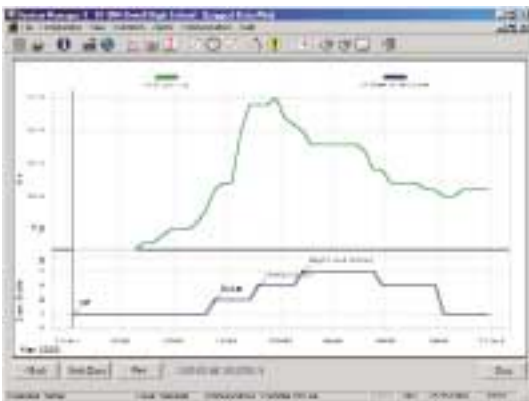
Specialising in real time control and monitoring systems, Hawkesbury Consulting can provide you with a solution specifically built to meet your needs. We will build systems for the control and monitoring of plant or the collection and analysis of data.

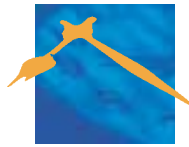
The solutions we supply can also be fully integrated with the telecommunications or mobile data networks for the distribution or collection of data with remote locations.

We provide solutions for energy management, data collection, test and manufacturing equipment.

- ◆ Building Energy Management Systems
- ◆ Real Time Control and Monitoring
- ◆ Telecommunications
- ◆ Data Collection
- ◆ Manufacturing Systems
- ◆ Test Equipment

Our applications are generally developed within a Microsoft centric development environment, using tools from Microsoft Visual Studio. Where required, our solutions can be integrated to a wide range of database technologies for the storage and analysis of data.





## Development Approach

Hawkesbury Consulting has developed the 'Evolution' process model over a range of projects. This model combines an iterative RAD style development process with a more traditional project management framework. This mix provides a clear management structure but has the significant advantages of an iterative development process for the software construction phase.

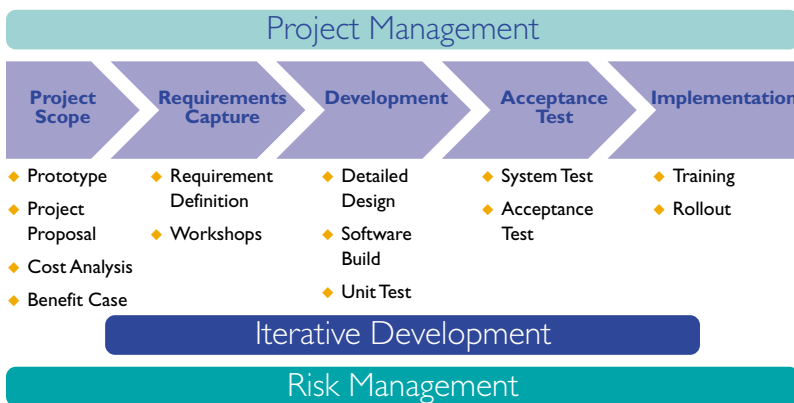
The iterative-based RAD approach ensures that you remain close to the implementation throughout development. Through the frequent release of iterations of the software, you see the application develop, and have the opportunity to make the necessary input to ensure a successful solution.

Hawkesbury Consulting will leverage reusable components and pre-existing frameworks to speed development and increase

productivity. Together with a strong understanding of the technology and effective utilisation of the Evolution development process,

Hawkesbury Consulting will deliver the right application on time and to budget.

- ◆ Close working partnership
- ◆ Rapid applications development
- ◆ Latest technology
- ◆ Reusable components
- ◆ Pre-existing frameworks
- ◆ Iterative development process



## Application Maintenance

We strongly believe that effective support and maintenance of an application is vital to receive the full business benefits of a solution and improve the return on investment. Ensuring the application is kept up to date with changing requirements and technology platforms will extend the life of systems.

Whether the application was developed by Hawkesbury Consulting or not, we will provide a support package tailored to your specific needs. The standard support options typically include the following:



## Standard Support & Maintenance

Based on a fixed annual payment, the Standard Support and Maintenance agreement provides access to telephone and email help desk support. All reported faults are addressed against agreed timescales.

## Premium Support & Maintenance

The Premium Support and Maintenance agreement has all of the features of the Standard agreement. However, in addition it includes upgrading the application to compatible operating systems or database technology, thus ensuring your organisation is freed from supporting old technology.

## Pay Per Issue

Hawkesbury Consulting also provides a Pay Per Issue support agreement, where support and maintenance is charged on a time and material basis.





- ◆ **e-Business Solutions**
- ◆ **Financial Services Applications**
- ◆ **Sales Force Automation**
- ◆ **Payroll and Accountancy Applications**
- ◆ **Energy Management Systems**
- ◆ **Payment Systems**
- ◆ **Real Time Control and Monitoring**
- ◆ **Data Integration**
- ◆ **Client Server Database Applications**

**Hawkesbury Consulting Limited**  
**2 Station Road**  
**Swavesey**  
**Cambridge**  
**CB4 5QJ**  
**United Kingdom**

**Tel: +44 (0)1954 231486**  
**Fax: +44 (0)1954 230384**  
**Email: [info@hawkesbury.co.uk](mailto:info@hawkesbury.co.uk)**  
**Web: [www.hawkesbury.co.uk](http://www.hawkesbury.co.uk)**